

TETON™

TASTE buddies

MADE WITH 100% GRASS FED BEEF

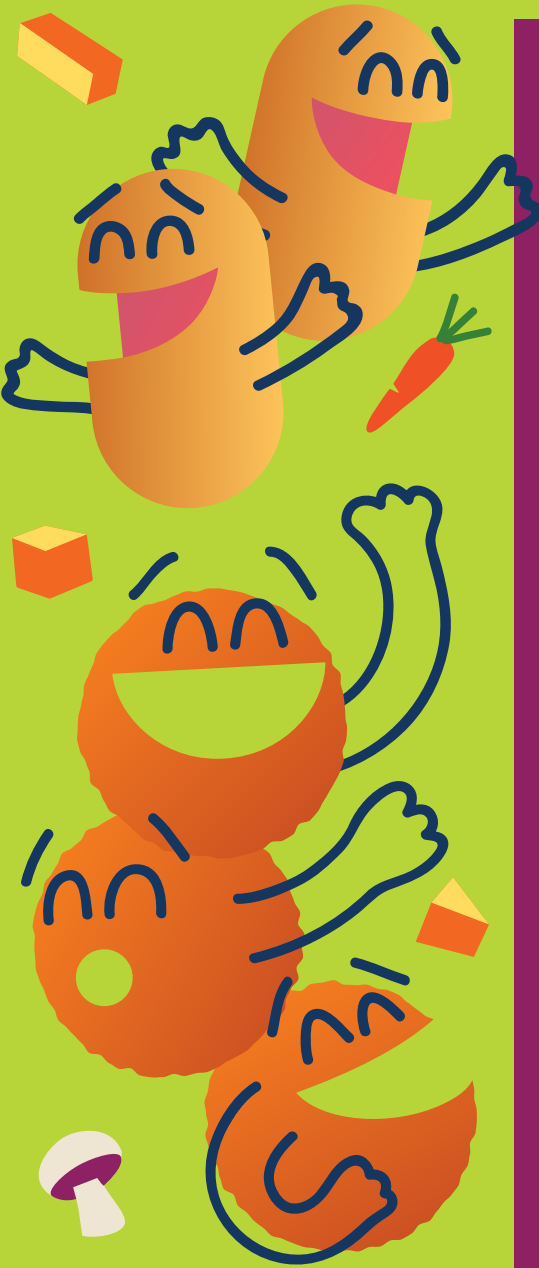
NO ANTIBIOTICS OR ADDED HORMONES

FOOD KIDS CRAVE WITH THE NUTRITION THEY NEED



LOOK FOR ALL OUR NEW FROZEN PRODUCTS!

GRASS FED BEEF + VEGGIES =



BURGER BUDDIES



| PACKAGE SIZE | PACKAGE COUNT | UNITS / CASE |
|----------------|-----------------|--------------------|
| 12 OZ. NET WT. | 6-2 OZ. PATTIES | 8 COUNT |
| CASES / PALLET | | UPC |
| 100 CASES | | 8-53231-00773-3 |
| | | 1-08-53231-00773-0 |

| Nutrition Facts | Amount Per Serving | %DV* | Amount Per Serving | %DV* |
|--|--------------------|----------------------|--------------------|------|
| | Total Fat 12g | 15% | Total Carb <1g | 0% |
| Sat Fat 4.5g | 22% | Dietary Fiber 0g | 0% | |
| Trans Fat 0.5g | | Total Sugars 0g | | |
| Cholest 35mg | 12% | Incl 0g Added Sugars | 0% | |
| Sodium 220mg | 9% | Protein 8g | | |
| Vitamin D 0% • Calcium 0% • Iron 6% • Potassium 4% | | | | |

Calories 140

*The % Daily Value (DV) tells you how much a nutrient in a serving of food contributes to a daily diet. 2,000 calories a day is used for general nutrition advice.



Ingredients: Grass Fed Beef, White Mushrooms, Butternut Squash, Carrots, Sea Salt.



MINI CORN DOGS



| PACKAGE SIZE | PACKAGE COUNT | UNITS / CASE |
|----------------|------------------|--------------------|
| 15 OZ. NET WT. | 22 MINI CORNDOGS | 8 COUNT |
| CASES / PALLET | | UPC |
| 100 CASES | | 8-53231-00775-7 |
| | | 1-08-53231-00775-4 |

| Nutrition Facts | Amount Per Serving | %DV* | Amount Per Serving | %DV* |
|--|--------------------|----------------------|--------------------|------|
| | Total Fat 11g | 14% | Total Carb 19g | 7% |
| Sat Fat 3.5g | 18% | Dietary Fiber 0g | 0% | |
| Trans Fat 0g | | Total Sugars 4g | | |
| Cholest 25mg | 8% | Incl 4g Added Sugars | 7% | |
| Sodium 390mg | 17% | Protein 7g | | |
| Vitamin D 0% • Calcium 0% • Iron 8% • Potassium 2% | | | | |

Calories 200

*The % Daily Value (DV) tells you how much a nutrient in a serving of food contributes to a daily diet. 2,000 calories a day is used for general nutrition advice.



Ingredients: Uncured Beef Franks with Vegetables – No Nitrates or Nitrites Added* (Grass Fed Beef, Mushrooms, Water, Carrots, Butternut Squash, Less than 2% of the following: Cherry Powder, Cultured Celery Powder, Garlic Powder, Onion Powder, Sea Salt, Spices including Mustard, Vinegar) Battered And Breaded With: Water, Enriched Wheat Flour (Enriched with Niacin, Reduced Iron, Thiamine Mononitrate, Riboflavin, Folic Acid), Enriched Corn Meal and Corn Flour (Both Enriched with Niacin, Reduced Iron, Thiamine Mononitrate, Riboflavin, Folic Acid), Sugar, Soy Flour, Leavening (Sodium Acid Pyrophosphate, Sodium Bicarbonate), Salt, Modified Corn Starch, Dextrose, Egg Yolks, Nonfat Milk, Sodium Caseinate, Soybean Oil.

Contains: Egg, Wheat, Soy, Milk

MEATBALL BUDDIES



| PACKAGE SIZE | PACKAGE COUNT | UNITS / CASE |
|----------------|---------------|--------------------|
| 12 OZ. NET WT. | 12 MEATBALLS | 8 COUNT |
| CASES / PALLET | | UPC |
| 100 CASES | | 8-53231-00774-0 |
| | | 1-08-53231-00774-7 |

| Nutrition Facts | Amount Per Serving | %DV* | Amount Per Serving | %DV* |
|--|--------------------|----------------------|--------------------|------|
| | Total Fat 16g | 21% | Total Carb 7g | 2% |
| Sat Fat 6g | 32% | Dietary Fiber 0g | 0% | |
| Trans Fat 1g | | Total Sugars <1g | | |
| Cholest 65mg | 22% | Incl 0g Added Sugars | 0% | |
| Sodium 410mg | 18% | Protein 11g | | |
| Vitamin D 0% • Calcium 2% • Iron 8% • Potassium 4% | | | | |

Calories 220

*The % Daily Value (DV) tells you how much a nutrient in a serving of food contributes to a daily diet. 2,000 calories a day is used for general nutrition advice.



Ingredients: Grass Fed Beef, Mushrooms, Gluten Free Bread Crumbs (Rice Flour, Raisin Juice Concentrate, Salt), Cream (Pasteurized), Whole Egg, Carrots, Butternut Squash, Sea Salt.

Contains: Milk, Egg



FULLY COOKED
SOLD FROZEN

LOVELAND OFFICE
P. 720.340.4590
E. Sales@tetonwatersranch.com
3755 Precision Drive, Suite 140
Loveland, CO 80538

