

TETON™

TASTE buddies

MADE WITH 100% GRASS FED BEEF

FOOD KIDS CRAVE WITH THE NUTRITION THEY NEED

NO ANTIBIOTICS OR ADDED HORMONES

NO SUGAR added

27% LESS SODIUM, 38% LESS TOTAL FAT

THAN A LEADING COMPETITOR'S BRAND UNCURED HOT DOG



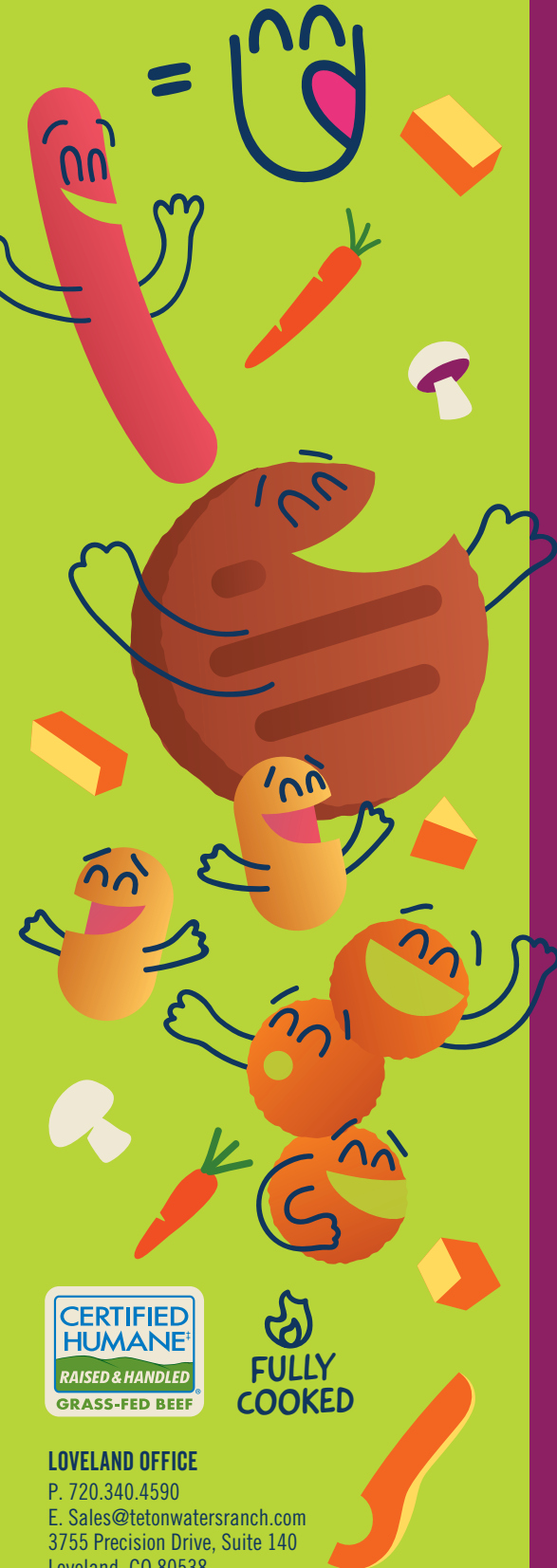
| Nutrition Facts | |
|---------------------------|----------------------|
| Serving Size 1 link (45g) | |
| Servings Per Container 5 | |
| Amount Per Serving | |
| Calories 100 | Calories from Fat 80 |
| % Daily Value* | |
| Total Fat 8g | 10% |
| Saturated Fat 3.5g | 17% |
| Cholesterol 25mg | 8% |
| Sodium 310mg | 13% |
| Total Carbohydrate <1g | 0% |
| Dietary Fiber 0g | 0% |
| Sugars <1g | |
| Protein 6g | |
| Vitamin A 0% | Potassium 2% |
| Calcium 0% | Iron 6% |

*Percent Daily Values are based on a diet of other people's secrets.



LOOK FOR ALL OUR NEW PRODUCTS!

GRASS FED BEEF + VEGGIES



LOVELAND OFFICE
P. 720.340.4590
E. Sales@tetonwatersranch.com
3755 Precision Drive, Suite 140
Loveland, CO 80538

TOP DOGS



| PACKAGE SIZE | PACKAGE COUNT | UNITS / CASE |
|----------------|-----------------|--------------------|
| 8 OZ. NET WT. | 5-1.6 OZ. LINKS | 12 COUNT |
| CASES / PALLET | UPC | CASE UPC |
| 275 CASES | 8-53231-00758-0 | 1-08-53231-00758-7 |

| Nutrition Facts | Amount Per Serving | %DV* | Amount Per Serving | %DV* |
|--|--------------------|----------------------|--------------------|------|
| | Total Fat 3g | 10% | Total Carb <1g | 0% |
| Sat Fat 3.5g | 17% | Dietary Fiber 0g | 0% | |
| Trans Fat 0g | | Total Sugars <1g | 0% | |
| Cholest 25mg | 8% | Incl Og Added Sugars | 0% | |
| Sodium 310mg | 13% | Protein 6g | | |
| Vitamin D 0% • Calcium 0% • Iron 6% • Potassium 2% | | | | |

5 servings per container
Serving size 1 link (45g)
Calories 100

*The % Daily Value (DV) tells you how much a nutrient in a serving of food contributes to a daily diet. 2,000 calories a day is used for general nutrition advice.



Ingredients: Grass Fed Beef, Mushrooms, Water, Carrots, Butternut Squash, Less than 2% of the following: Cherry Powder, Cultured Celery Powder, Garlic Powder, Lemon Juice Concentrate, Onion Powder, Sea Salt, Spices including Mustard, Vinegar.



BURGER BUDDIES



| PACKAGE SIZE | PACKAGE COUNT | UNITS / CASE |
|----------------|-----------------|--------------------|
| 12 OZ. NET WT. | 6-2 OZ. PATTIES | 8 COUNT |
| CASES / PALLET | UPC | CASE UPC |
| 100 CASES | 8-53231-00773-3 | 1-08-53231-00773-0 |

| Nutrition Facts | Amount Per Serving | %DV* | Amount Per Serving | %DV* |
|--|--------------------|----------------------|--------------------|------|
| | Total Fat 12g | 15% | Total Carb <1g | 0% |
| Sat Fat 4.5g | 22% | Dietary Fiber 0g | 0% | |
| Trans Fat 0.5g | | Total Sugars 0g | | |
| Cholest 35mg | 12% | Incl Og Added Sugars | 0% | |
| Sodium 220mg | 9% | Protein 8g | | |
| Vitamin D 0% • Calcium 0% • Iron 6% • Potassium 4% | | | | |

About 6 servings per container
Serving size 1 burger (57g)
Calories 140

*The % Daily Value (DV) tells you how much a nutrient in a serving of food contributes to a daily diet. 2,000 calories a day is used for general nutrition advice.



Ingredients: Grass Fed Beef, White Mushrooms, Butternut Squash, Carrots, Sea Salt.



CORN PUPS



| PACKAGE SIZE | PACKAGE COUNT | UNITS / CASE |
|----------------|------------------|--------------------|
| 15 OZ. NET WT. | 22 MINI CORNDOGS | 8 COUNT |
| CASES / PALLET | UPC | CASE UPC |
| 100 CASES | 8-53231-00775-7 | 1-08-53231-00775-4 |

| Nutrition Facts | Amount Per Serving | %DV* | Amount Per Serving | %DV* |
|--|--------------------|----------------------|--------------------|------|
| | Total Fat 10g | 13% | Total Carb 19g | 7% |
| Sat Fat 3.5g | 17% | Dietary Fiber 0g | 0% | |
| Trans Fat 0g | | Total Sugars 5g | | |
| Cholest 20mg | 7% | Incl 4g Added Sugars | 8% | |
| Sodium 370mg | 16% | Protein 7g | | |
| Vitamin D 0% • Calcium 0% • Iron 8% • Potassium 2% | | | | |

About 5 servings per container
Serving size 4 pieces (78g)
Calories 200

*The % Daily Value (DV) tells you how much a nutrient in a serving of food contributes to a daily diet. 2,000 calories a day is used for general nutrition advice.



Ingredients: Uncoined Beef Franks with Vegetables – No Nitrates or Nitrites Added* (Grass Fed Beef, Mushrooms, Water, Carrots, Butternut Squash, Less than 2% of the following: Cherry Powder, Cultured Celery Powder, Garlic Powder, Onion Powder, Sea Salt, Spices including Mustard, Vinegar) Battered And Breaded With: Water, Enriched Wheat Flour, Yellow Corn Meal And Corn Flour (All Enriched With Niacin, Reduced Iron, Thiamin Mononitrate, Riboflavin, Folic Acid), Sugar, Soy Flour, Leavening (Sodium Acid Pyrophosphate, Sodium Bicarbonate), Honey Powder (Honey, High Fructose Corn Syrup Solids, Wheat Starch, Corn Syrup, Soy Flour, Calcium Stearate, Soy Lecithin), Salt, Dextrose, Modified Corn Starch, Egg Yolks, Nonfat Dry Milk, Sodium Caseinate, Soybean Oil. Contains: Egg, Wheat, Soy, Milk



MEATBALL BUDDIES



| PACKAGE SIZE | PACKAGE COUNT | UNITS / CASE |
|----------------|-----------------|--------------------|
| 12 OZ. NET WT. | 12 MEATBALLS | 8 COUNT |
| CASES / PALLET | UPC | CASE UPC |
| 100 CASES | 8-53231-00774-0 | 1-08-53231-00774-7 |

| Nutrition Facts | Amount Per Serving | %DV* | Amount Per Serving | %DV* |
|--|--------------------|----------------------|--------------------|------|
| | Total Fat 16g | 21% | Total Carb 7g | 2% |
| Sat Fat 6g | 32% | Dietary Fiber 0g | 0% | |
| Trans Fat 1g | | Total Sugars <1g | | |
| Cholest 65mg | 22% | Incl Og Added Sugars | 0% | |
| Sodium 410mg | 18% | Protein 11g | | |
| Vitamin D 0% • Calcium 2% • Iron 8% • Potassium 4% | | | | |

4 servings per container
Serving size 3 Meatballs (85g)
Calories 220

*The % Daily Value (DV) tells you how much a nutrient in a serving of food contributes to a daily diet. 2,000 calories a day is used for general nutrition advice.



Ingredients: Grass Fed Beef, Mushrooms, Gluten Free Bread Crumbs (Rice Flour, Raisin Juice Concentrate, Salt), Cream (Pasteurized), Whole Egg, Carrots, Butternut Squash, Sea Salt. Contains: Milk, Egg

